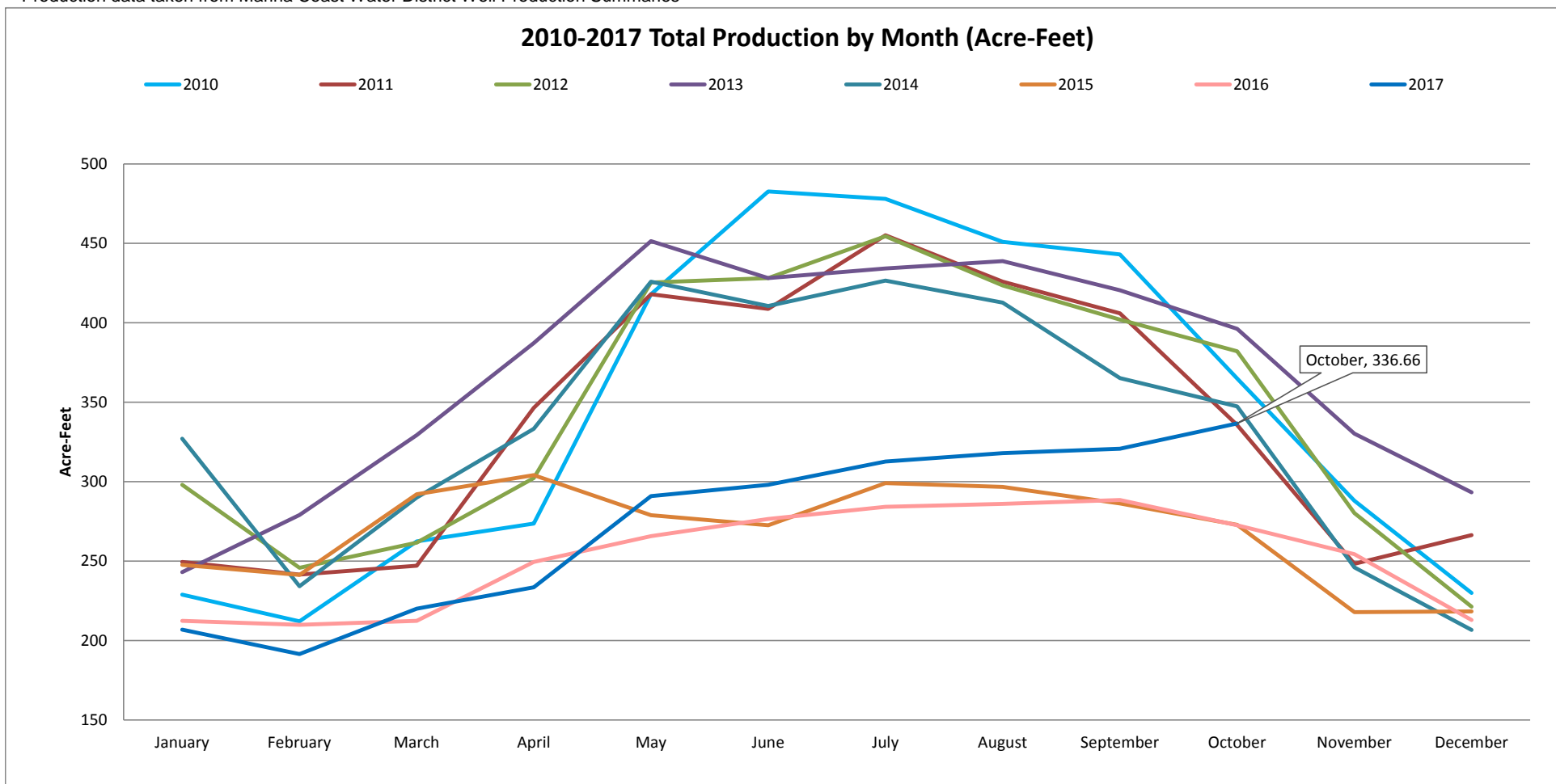


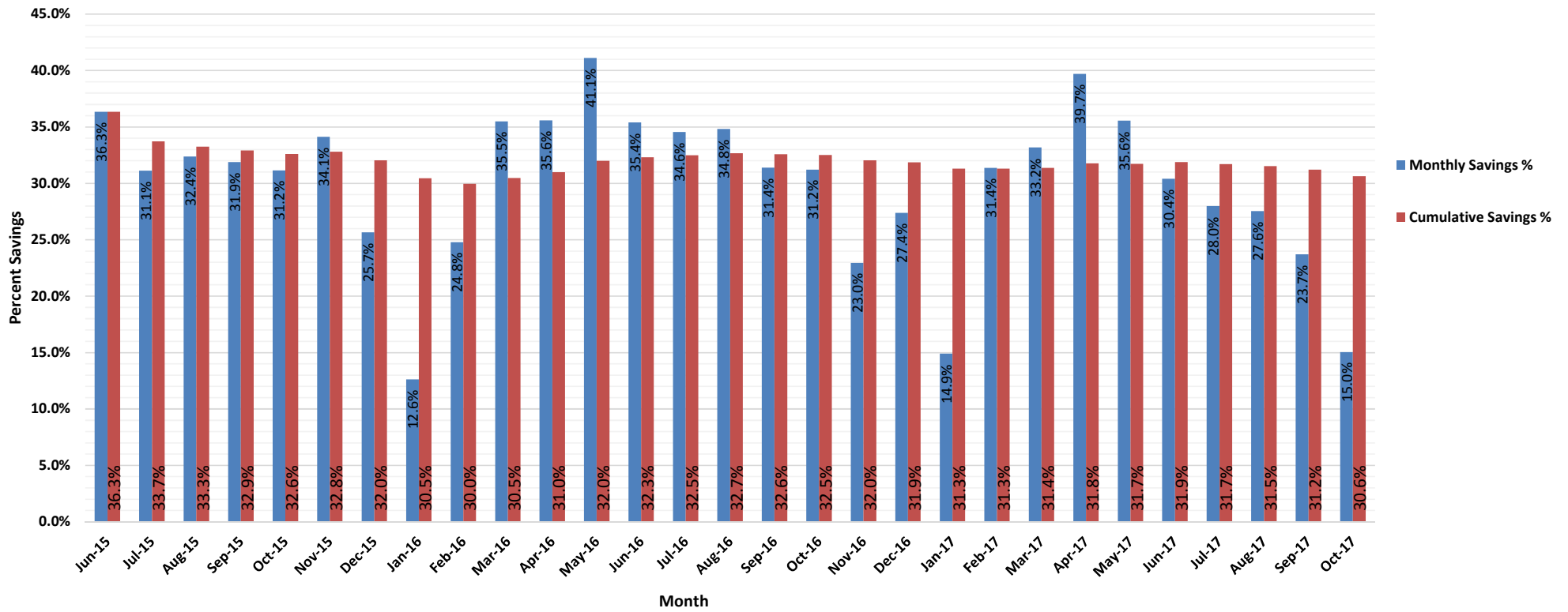
Production by Month (acre-feet)

	2008	2009	2010	2011	2012	2013	2014	2015	2016	2017
January	250.00	339.10	228.90	249.50	297.99	243.06	327.14	247.66	212.37	206.84
February	234.00	218.80	212.10	241.52	245.82	279.08	234.16	241.34	209.91	191.50
March	295.00	277.40	262.40	247.05	261.68	329.29	290.01	292.16	212.37	220.04
April	355.00	349.20	273.70	346.48	302.29	387.29	333.28	304.13	249.50	233.54
May	461.00	379.30	418.00	417.98	425.35	451.43	425.96	278.96	265.77	290.93
June	415.00	385.50	482.70	408.78	428.11	428.11	410.62	272.52	276.51	297.99
July	415.00	415.80	478.00	455.12	454.50	434.25	426.58	299.06	284.18	312.72
August	410.00	395.30	451.00	425.96	423.48	438.85	412.77	296.76	286.02	317.94
September	395.00	371.00	443.00	406.01	402.02	420.44	365.20	286.33	288.48	320.70
October	369.00	326.80	365.00	335.59	382.08	396.27	347.40	272.82	272.52	336.66
November	303.00	308.70	288.00	248.27	280.19	330.21	246.12	217.89	254.41	
December	267.00	270.70	230.00	266.38	221.32	293.26	206.69	218.41	212.98	
<b>TOTAL</b>	<b>4169.00</b>	<b>4037.60</b>	<b>4132.80</b>	<b>4048.64</b>	<b>4124.83</b>	<b>4431.54</b>	<b>4025.93</b>	<b>3228.04</b>	<b>3025.02</b>	<b>2728.86</b>

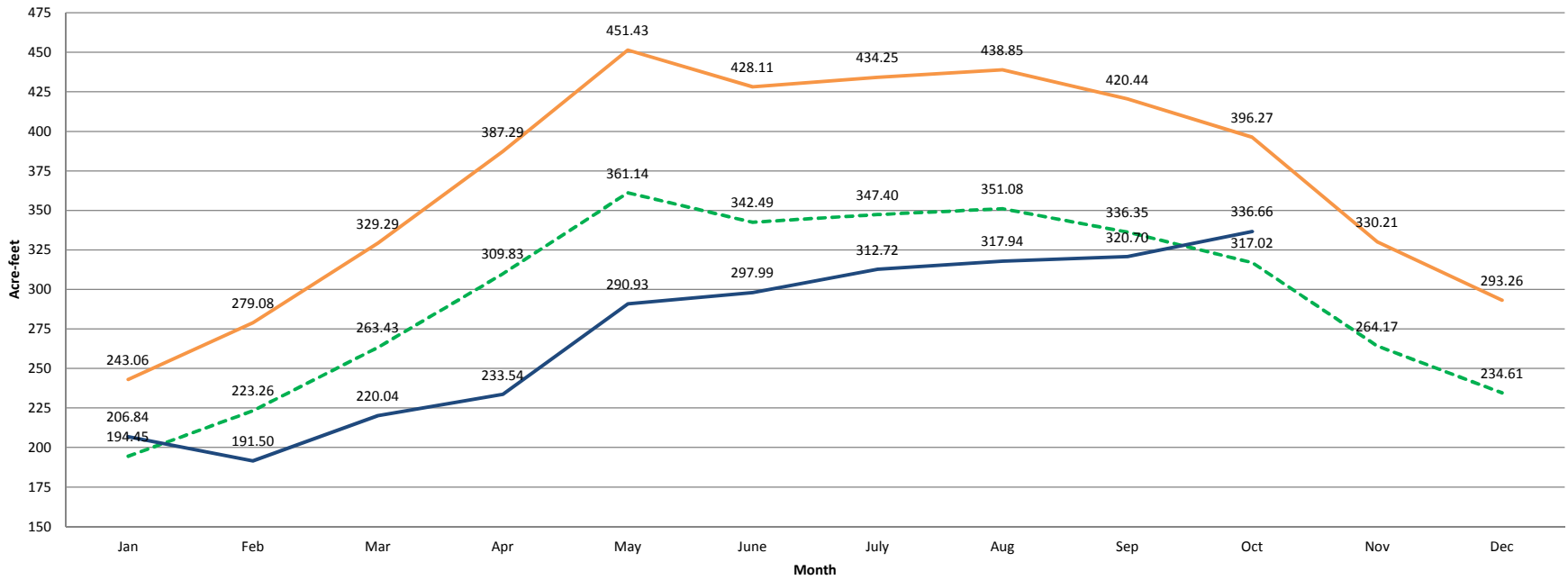
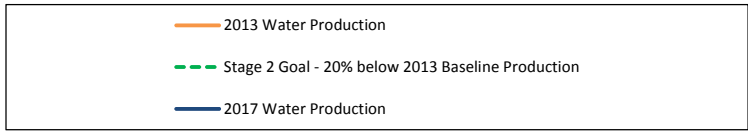
\* Production data taken from Marina Coast Water District Well Production Summaries



## Monthly Production Savings and Cumulative Savings Compared to 2013 June 2015 to Current Month



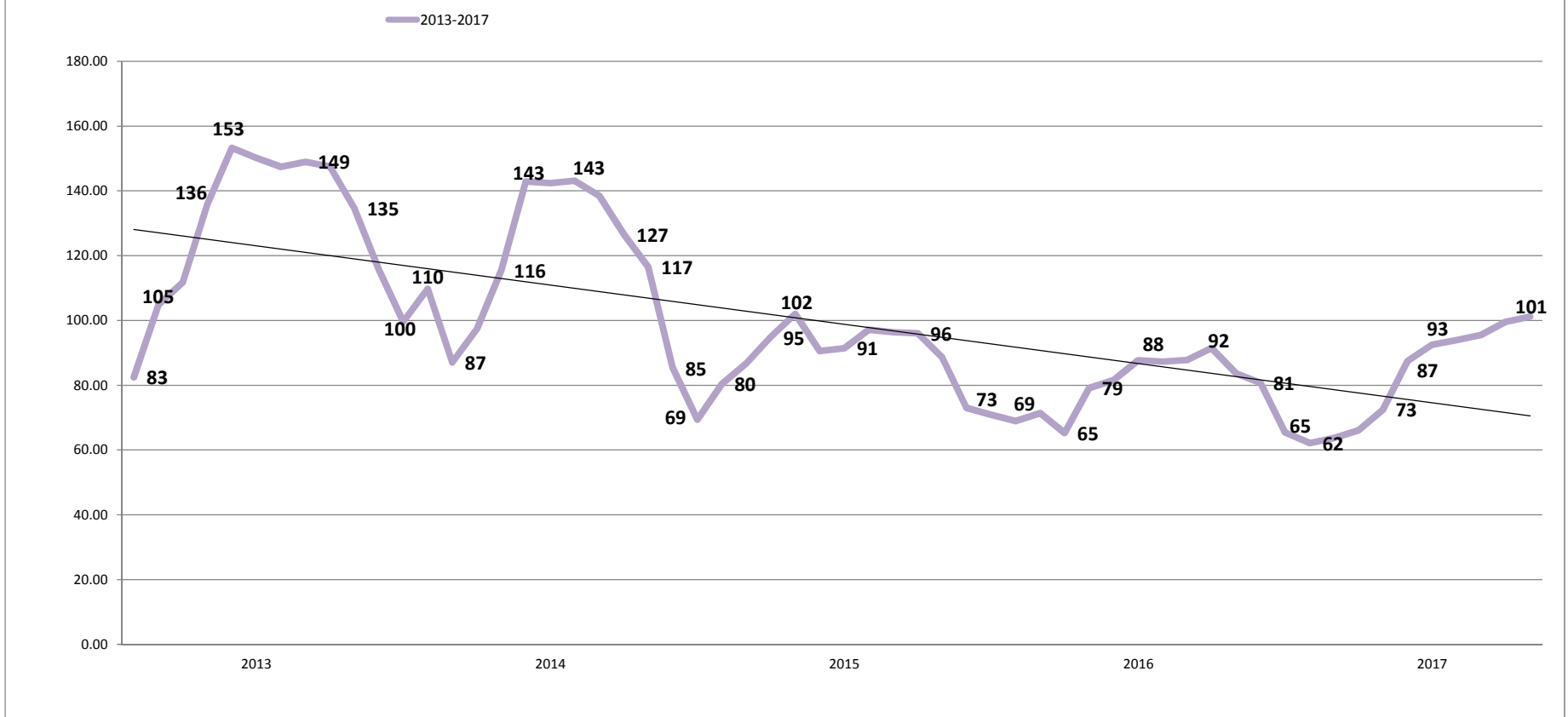
### 2017 Production VS. Water Production Reduction Goals



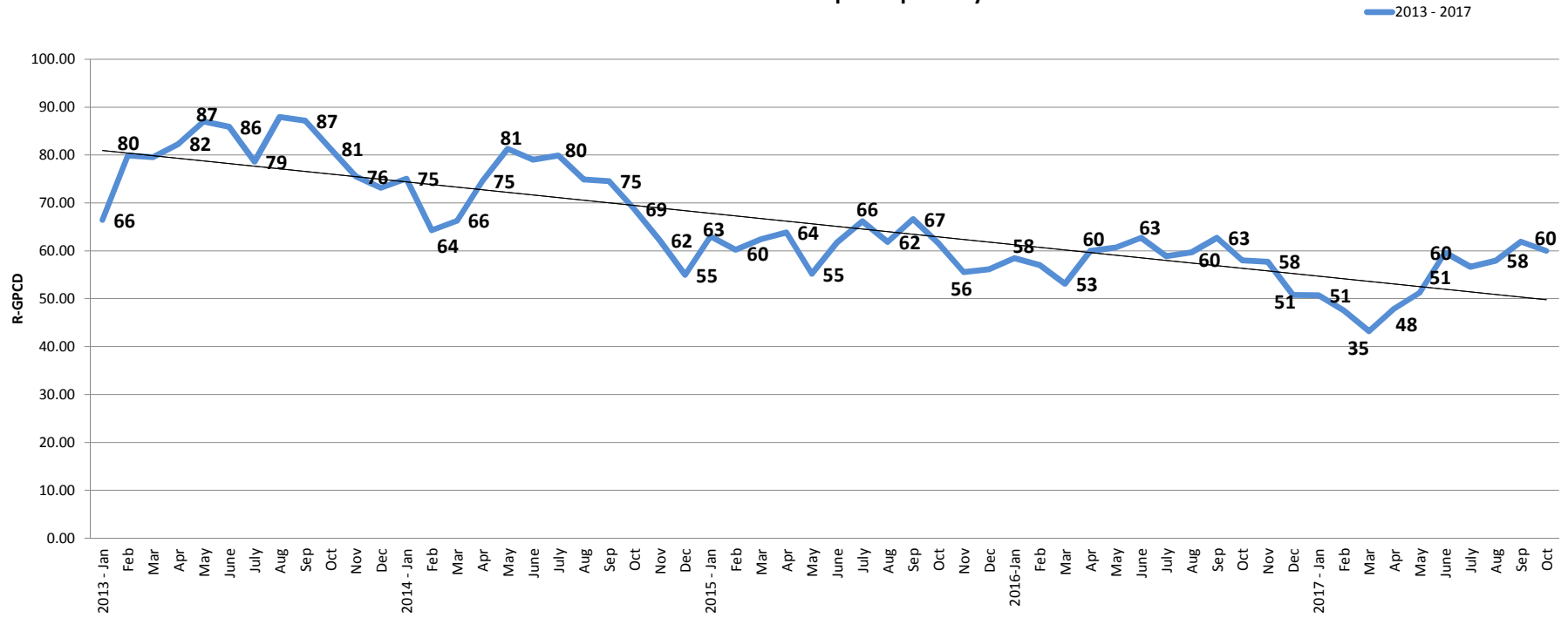
### District Baseline and GPCD Targets (Gross Production)

Description	Year	Amount (gpcd)
<b>Baseline GPCD</b>	<b>2008</b>	<b>133</b>
<b>Maximum Allowable Target</b>	<b>2020</b>	<b>126</b>
<b>Interim GPCD Target</b>	<b>2015</b>	<b>125</b>
<b>2020 GPCD Target</b>	<b>2020</b>	<b>117</b>
<b>2014 GPCD</b>	<b>2014</b>	<b>115</b>
<b>2015 GPCD</b>	<b>2015</b>	<b>89</b>
<b>2016 GPCD</b>	<b>2016</b>	<b>79</b>
<b>2017 GPCD (January-Current Month)</b>	<b>2017</b>	<b>84</b>

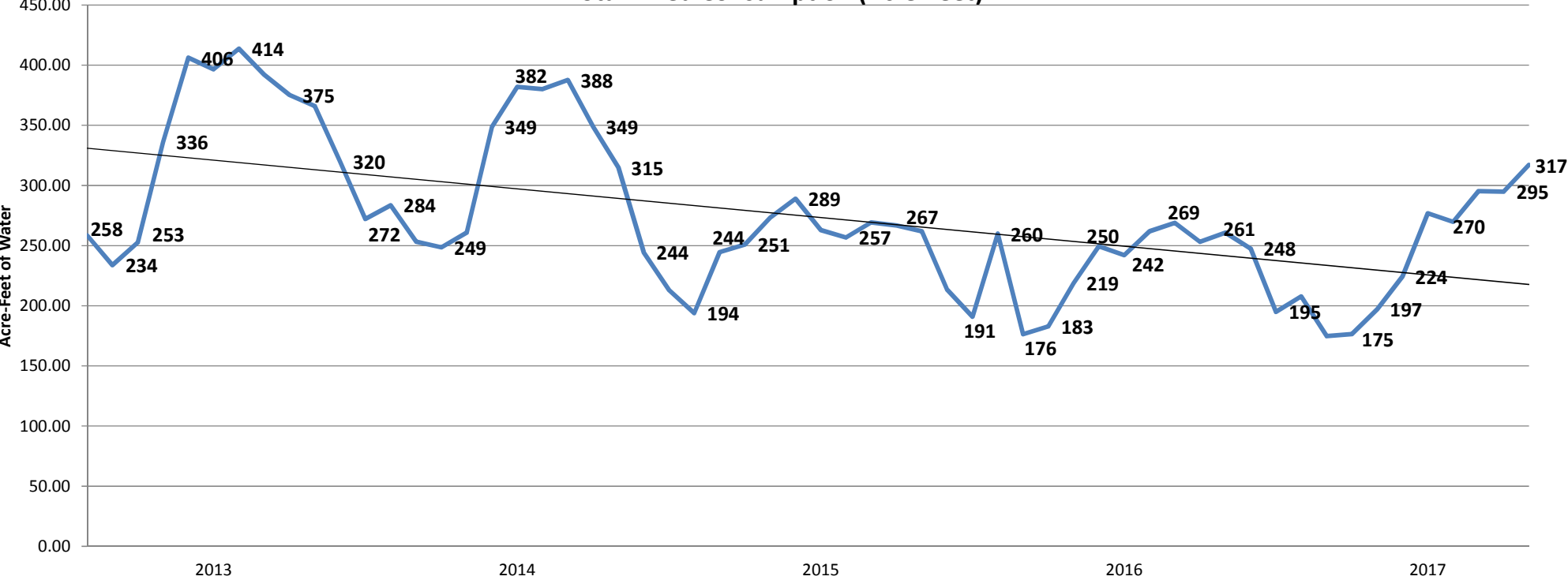
### 2013-2017 Monthly Gallons Per Capita Day (Gross Production)



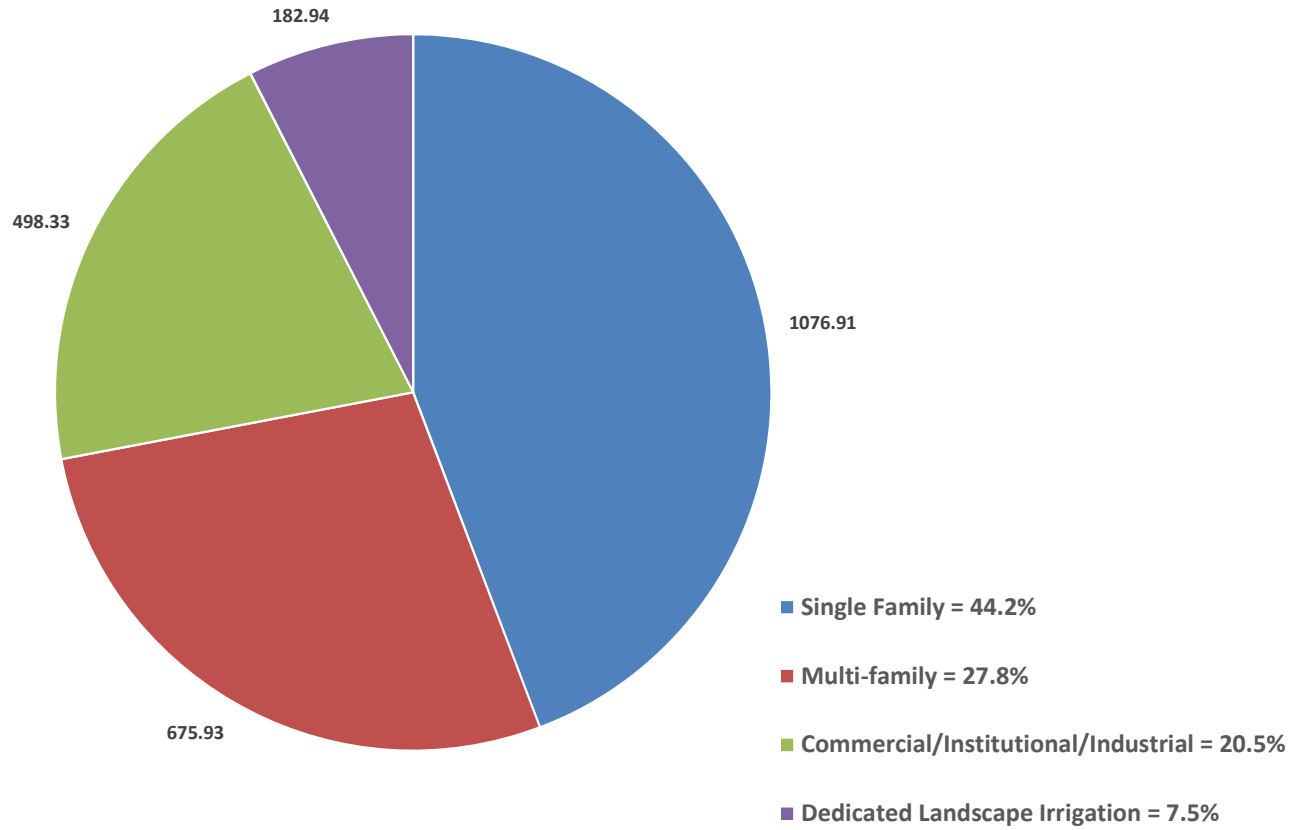
### 2013-2017 Residential Gallons-per-Capita-Day



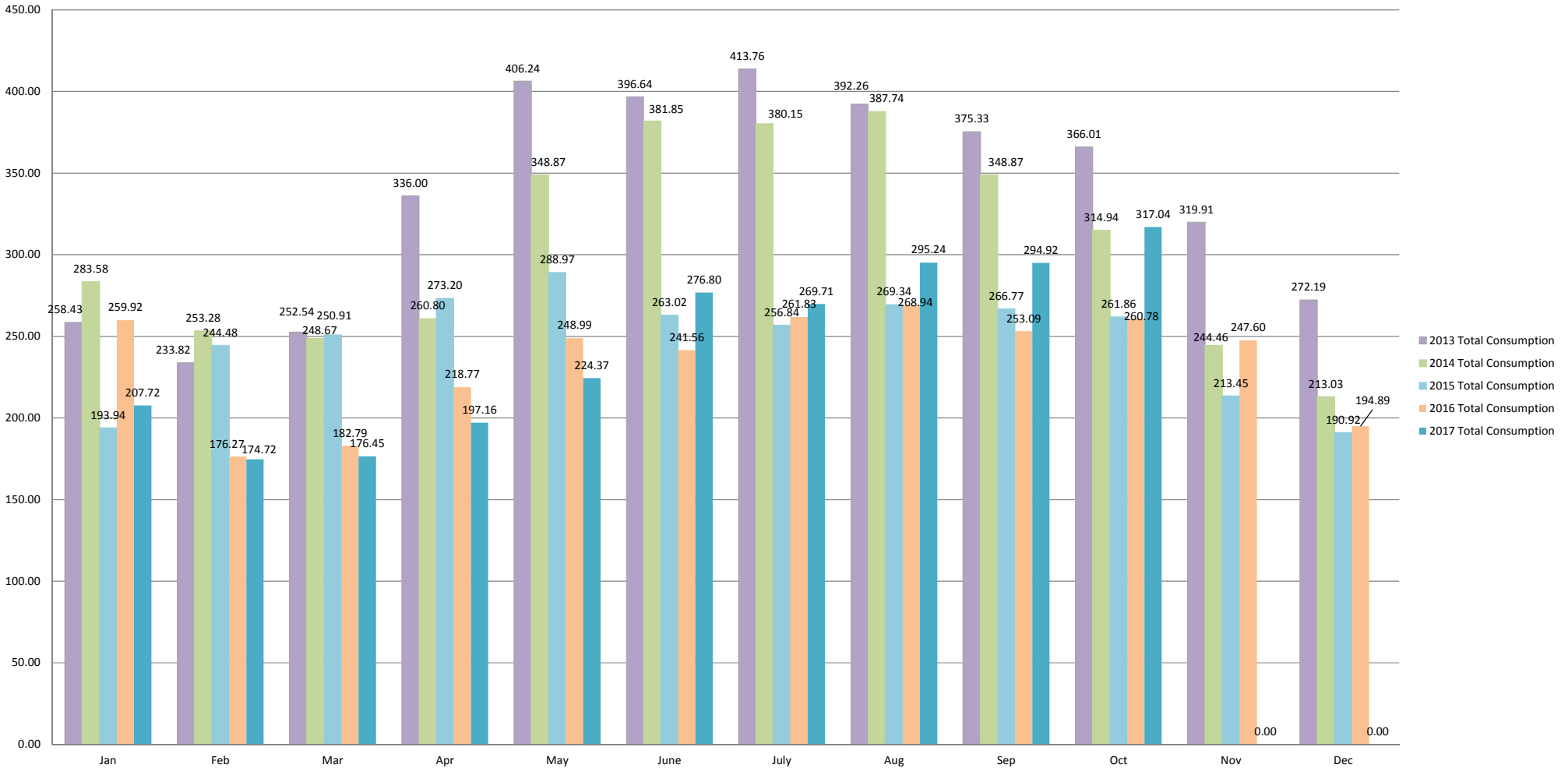
2013 - 2017  
Total Billed Consumption (Acre-Feet)



Total Billed Consumption 2017 Year-To-Date (Acre-Feet)

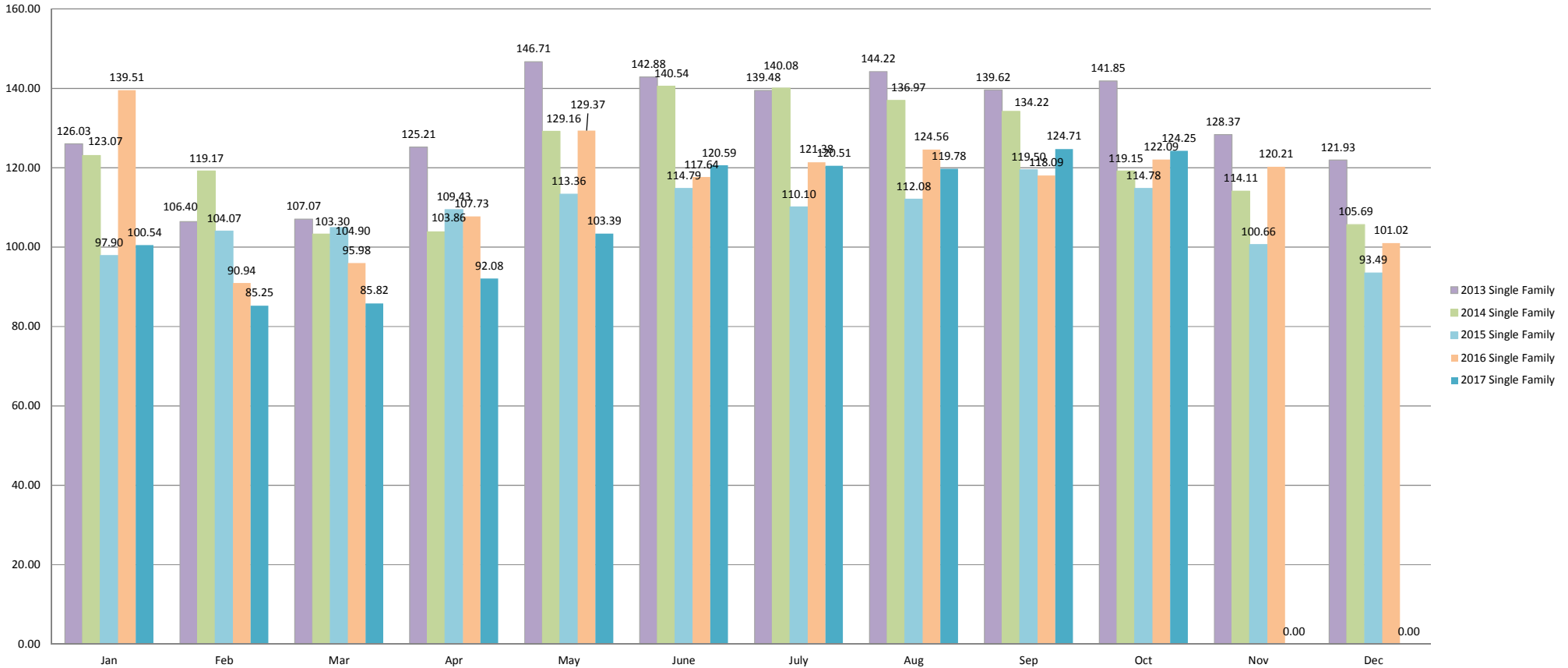


### 2013-2017 Total Consumption by Month (Acre-Feet)





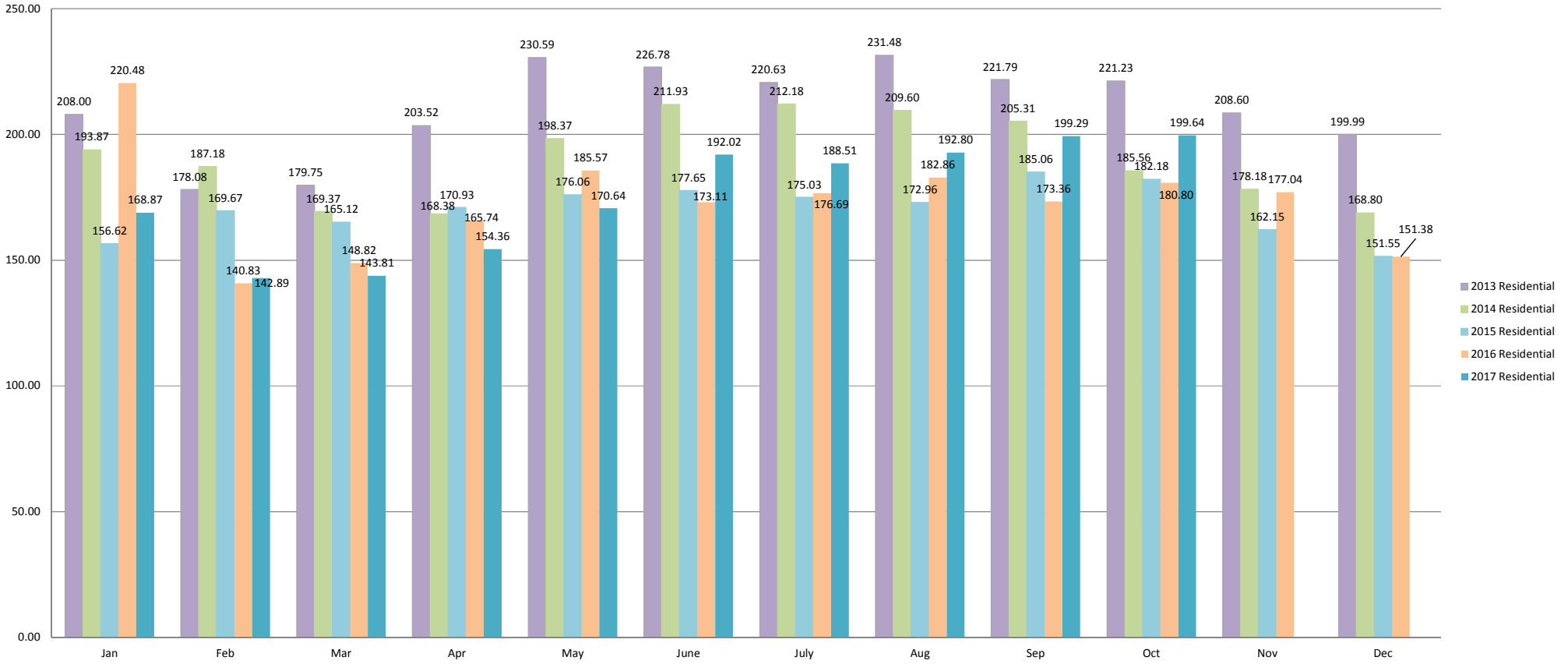
### 2013-2017 Single Family Consumption by Month (Acre-Feet)



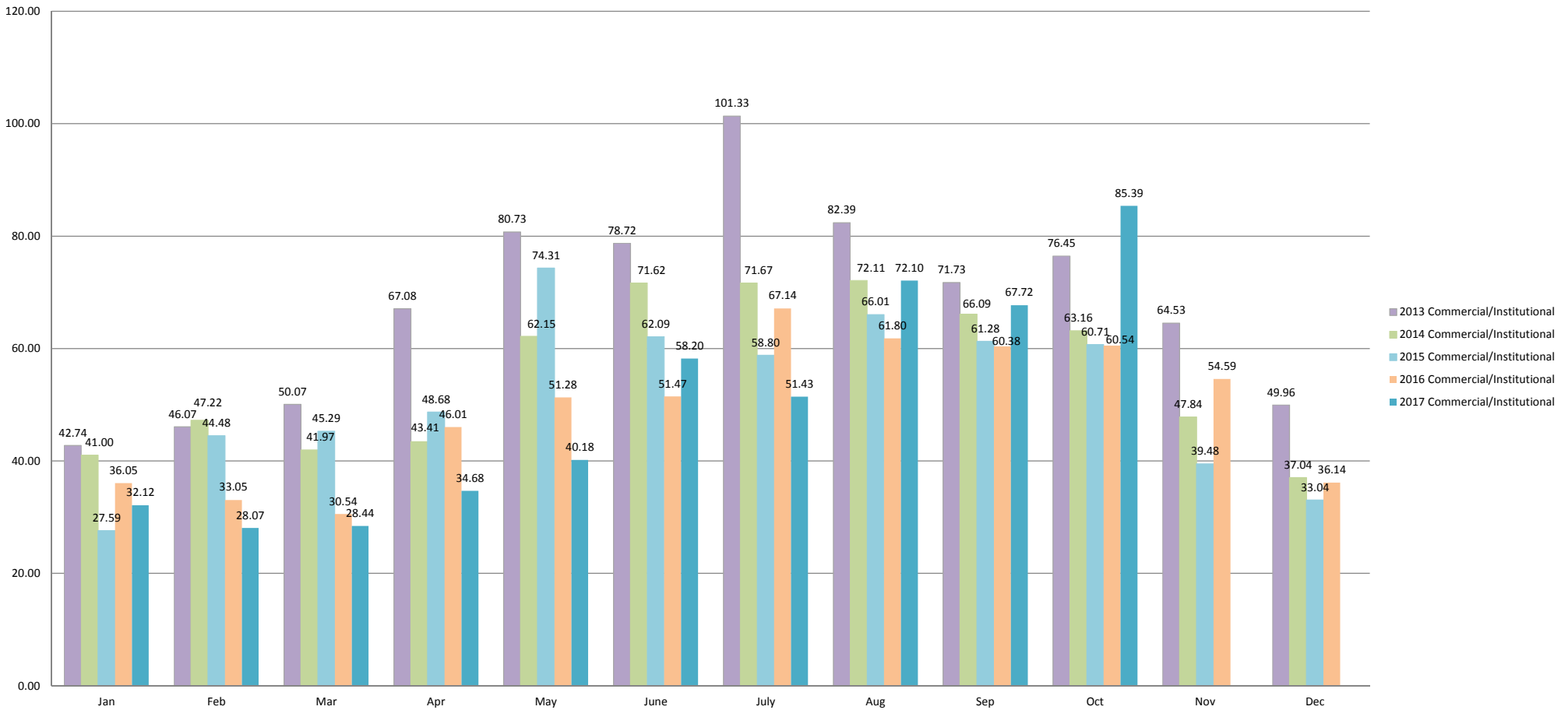
### 2013-2017 Multi-Family Total Consumption by Month (Acre-Feet)



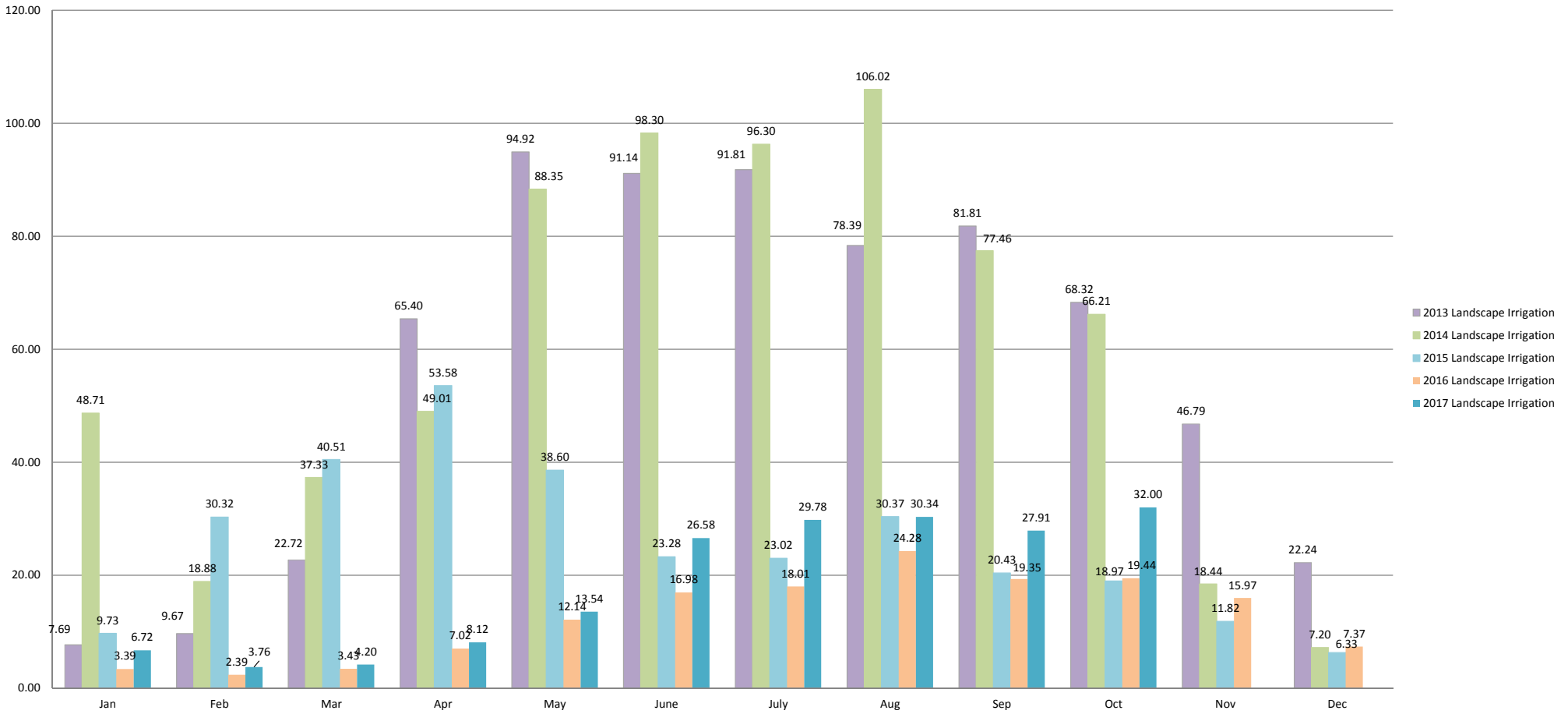
### 2013-2017 Residential Total Consumption by Month (Acre-Feet) (Single-Family and Multi-family Combined)



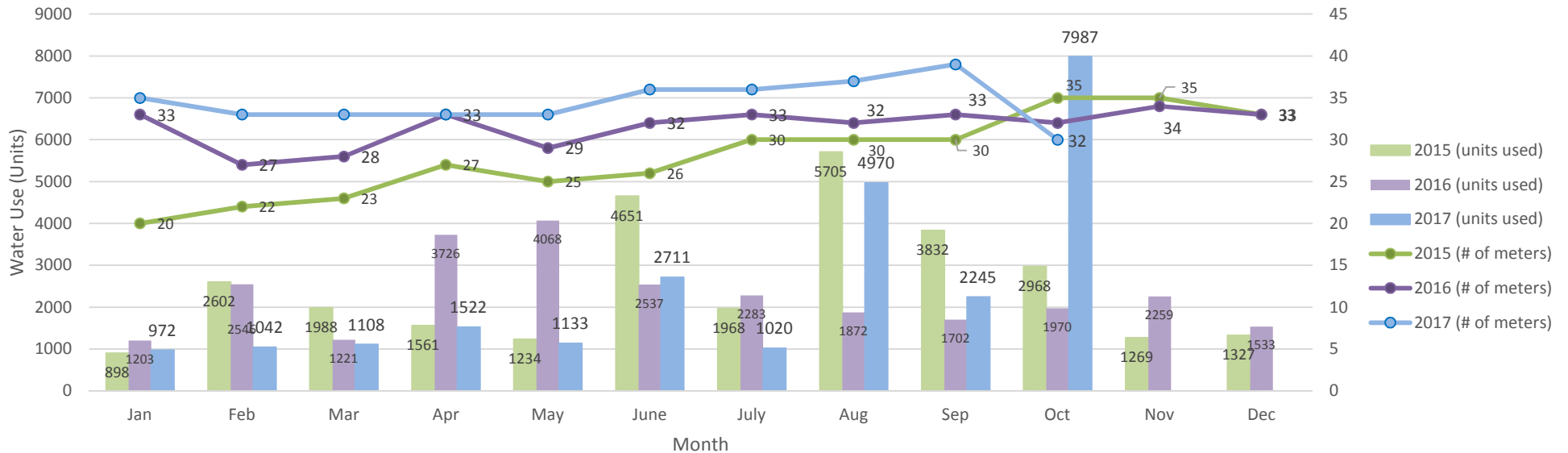
### 2013-2017 Commercial/Institutional Consumption by Month (Acre-Feet)



### 2013-2017 Landscape Irrigation Consumption by Month (Acre-Feet)



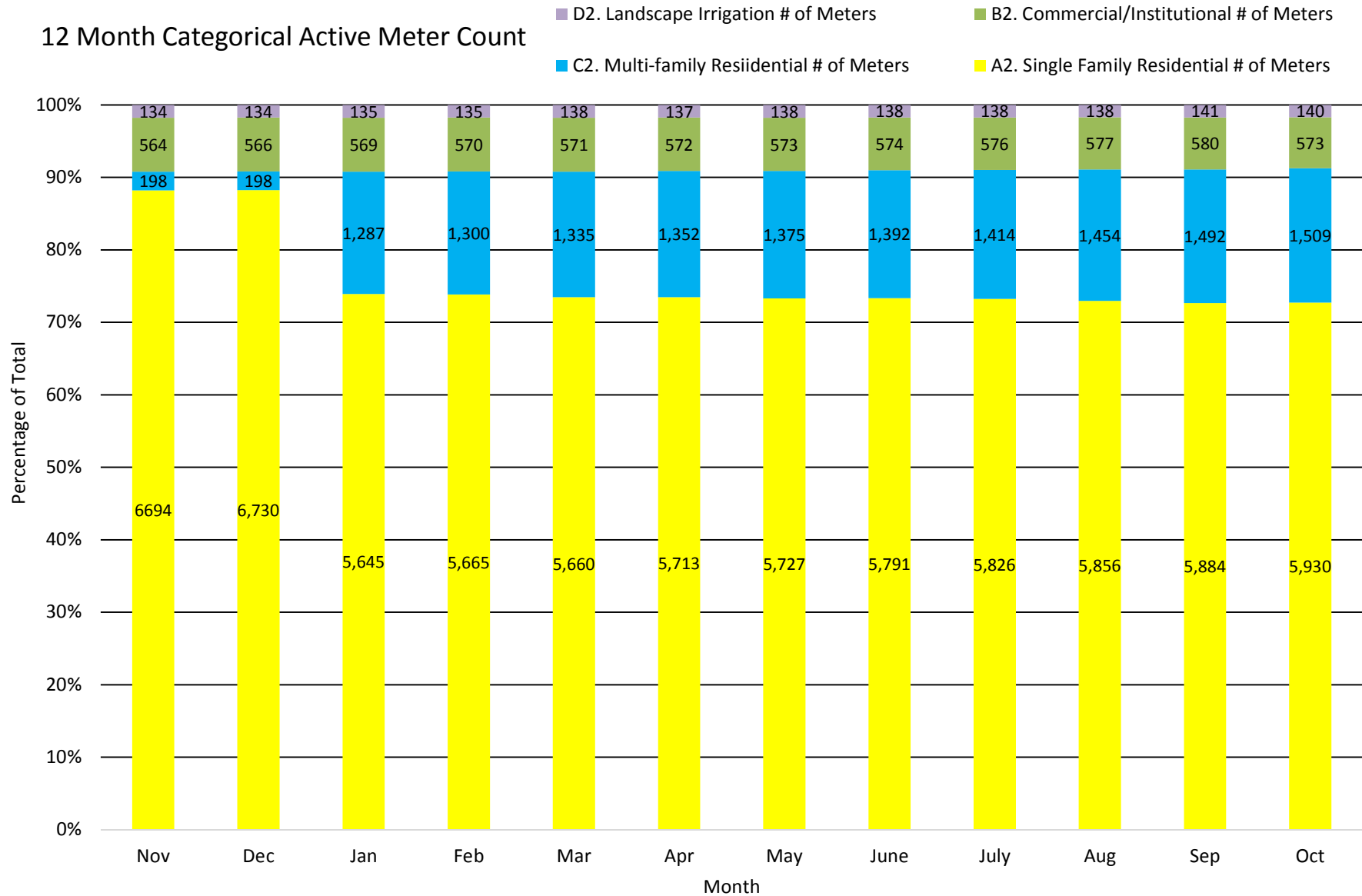
2015-2017 Total District Temporary Hydrant Meter Water Use in Units vs. # of Meters



### Temporary Meter Water Use: Percentage of Total Consumption

Past 12 Months												
	Nov	Dec	Jan	Feb	Mar	Apr	May	June	July	Aug	Sep	Oct
<b>Consumption (HCF)</b>	107,860	84,901	90,487	76,112	76,868	85,890	97,742	120,581	117,495	128,613	128,475	117,495
<b>Temporary Hydrant Use (HCF)</b>	2259	1533	972	1042	1108	1522	1133	2711	1020	4970	2245	7987
<b>Percentage</b>	2.1%	1.8%	1.1%	1.4%	1.4%	1.8%	1.2%	2.2%	0.9%	3.9%	1.7%	6.8%

# 12 Month Categorical Active Meter Count



## 2015 - 2017 Active Meter Count vs. Metered Consumption in Acre-Feet

